

CRAFTED BY HAND AND
HERITAGE

IRISH URNS AND
KEEPSAKES LIMITED



INTRODUCTION

CRAFTED BY HAND AND HERITAGE IN IRELAND

Irish Urns and Keepsakes presents a stunning collection of Celtic heritage Urns. Each Urn is designed and handcrafted by Irish Award-winning artists. All Urns are unique and inspired by Irish Celtic mythology, history, and heritage.

We believe that our skilled Artisans have captured the heart of Irish heritage in this carefully crafted Urn collection. We hope that you will find the right Urn that brings some warmth and comfort.

BOB HAMILTON - IRISHURNS.COM





**DESIGNS
INSPIRED BY 6,000 YEARS OF
HISTORY AND 5 OF THE BEST
IN IRELAND**



SEAMUS – WOOD TURNER AND SCULPTOR

He has a unique ability to recognize a beautiful object in a piece of wood and uses his skills to reveal the hidden and unique beauty.

He uses Irish native wood grown for decades and dried over many years to create breathtaking and totally unique Urns and memorials.

Seamus has won 20+ Irish National awards for his creations and has been commissioned for unique pieces for the President of Ireland, Royal Dublin Society, Irish Landscape Institute, to name but a few.

His unique sculptural pieces sometimes use textured, bleached and scorched woods, gold, metals, leather, glass.



THOMAS

2ND GENERATION POTTER CERAMICIST

A second-generation ceramicist and has been practicing his craft for three decades, sharing his creations to people from around the world.

Thomas is so well respected that he was selected to represent Ireland's Design and Crafts Council in New York in 2018.

Thomas has a very fine style with clean design and lines, his interpretation utilizes his skills to create a cultured yet contemporary Urn with Irish symbolism represented by the Newgrange Tri Spiral. (or triskele).



CIARÁN

ARTIST, DESIGNER, AND CERAMICIST FOR 30 YEARS.

Ciarán is an Irish language speaker and has a passion for Irish history and design.

This can be seen in his Irish heritage creations, each embellished by his own glazes-Each color and shade inspired by the landscape that surrounds his home.

Each Urn is fired in his self-made kiln.

Each collection piece represents our history, our people and the colors found on land and sea.

Ciarán says, “this is an expression of Ireland”.Combining form, design, and finish means his pieces are much sought after. Presented to many dignitaries including An Taoiseach -Irish Prime Minister and the President



RÁDEK –

ARTIST AND CERAMIC DESIGNER

A winner of numerous design awards and more recently Irelands' premier design 'Showcase' event and won the best ceramic design award nationally and as his works have been presented to our current president Michael D. Higgins, they are in high demand.

He seeks his Celtic Urn inspiration from living with his family near the Fingal shoreline, bordered between an abundant sea and the most fertile land in Ireland.

He has developed exception Cremation Urns. His Irish land and Sea Cremation Urn collection is appreciated by people across the globe for the design, the colors, the glazing technique, and the individuality of each and every Urn.

Creating a collection that represents our Island nation with hand-worked glazes that are inspired by the Irish coastline.

He has a unique style and his heart is invested in the art of each unique creation.



ROISÍN –

CAST GLASS CREMATION SCULPTURE

Roisín (Ro-sheen) lives with her family in the rural setting of Ballyboughal in North County Dublin. With a BA (Hons) Fine Arts degree in Applied Materials, specializing in Glass in the Irish National College of Art and Design.

She spent considerable time in the Corning Museum of Glass, New York. Where she studied with renowned glass artist, Carol Milne.

Roisín works in cast glass a multi-layered process with each piece taking weeks to create. She plays with form and color to add narrative to her artworks.

Roisín has sold works to Gallery owners, the Irelands' Office of public works for placement in Public building or Ministerial offices.

Her experiments with the transparent qualities of glass and the science of refraction allow her to fully express her concepts.



OUR CURATED COLLECTION

OUR COLLECTIONS

FULL BACKGROUND ON ARTISANS, DESIGN INSPIRATION AND DETAILED DESCRIPTIONS ARE AVAILABLE ON WEBSITE

THE BOANN CELTIC CREMATION URN - FERN

This Celtic Cremation Urn inspiration is from Irish mythology. The River Boyne flows into the Irish Sea and was created by the goddess Boann, from where the river got its name. This is where Fionn Macumhaill (McCool) caught the Salmon of Knowledge.



THE BOANN CELTIC CREMATION URN - SEAHOLLY

The surrounding area has a rich history of mythological and historical heritage. The River Boyne is home to many special places from Irish History including the passage tombs of Newgrange, Knowth and Dowth, the Hill of Tara an ancient seat of the High King of Ireland, Trim Castle, the Hill of Slane.



THE BOANN CELTIC CREMATION URN - SEASALT BLUE

On the lid of the Boann Celtic Cremation Urn is a single spiral inspired by stone carvings at Newgrange. In Irish mythology, the Spiral represents the sun, with a clockwise spiral indicating the shrinking Winter sun. Cremation was practiced in Ireland 5,000 years ago and across ancient civilizations.



THE BOANN CELTIC CREMATION URN - COBALT

The Boann Celtic Cremation Urn is delivered in a beautiful Urn Presentation Box. The box is lined with traditional Irish hessian (see image). Your Urn will arrive in an outer double corrugated box and surrounded on all sides by biodegradable foam padding to ensure safe arrival.



OUR COLLECTIONS

FULL BACKGROUND ON ARTISANS, DESIGN INSPIRATION AND DETAILED DESCRIPTIONS ARE AVAILABLE ON WEBSITE

BAN NA H-ÉIREANN URN

Ireland is often represented as a woman on the Irish Harp which is unique to our Celtic heritage. This Irish Urn is named as a celebration of the “woman of Ireland” or Bean na h-Éireann in Gaelic And also attributed to the many prominent Irish women. Ériu – Matron Goddess to which she gave her name ‘Érin’ to Erins green Isle.



CAIRLINN CLADDAGH URN

This design is inspired by the famous Claddagh Ring and symbol of love, loyalty, and friendship. Ciarán has utilized his design skill to combine the local ancient heritage of Carlingford with the Claddagh symbol of love. A Claddagh of eternal and intertwining love.



CALVARY CELTIC CROSS URN

This elegant Irish Urn is named after the Calvary shrine in Omeath, a place of pilgrimage along the Carlingford lough in County Louth. Ciarán's design is an interpretation of a Celtic cross. It is interlaced with ancient knotwork with a Celtic sun ring behind it. It is our Celtic Irish heritage.



OUR COLLECTIONS

FULL BACKGROUND ON ARTISANS, DESIGN INSPIRATION AND DETAILED DESCRIPTIONS ARE AVAILABLE ON WEBSITE

THE TORC URN -COBALT

The Double Spiral has many meanings. One popular interpretation is that of a partnered life, each spiral being the eternal energy for the other. Torcs were worn by Celtic noblemen and women as a necklace and were considered as protection in life and in the afterlife.



TORC CELTIC URN-FERN

This collection represents all that is the heart of the Irish Island nation. Each Urn has the powerful Celtic Spiral detailed in the lid a discrete Irish Emblem, influenced by our Irish heritage. All are unique as the glaze is hand applied individually and no two Urns are the same



THE TORC CELTIC URN – SEAHOLLY

The glaze color on the Torc Celtic Cremation Urn represents the greens of our as it touches our coast seagrass and golden sand and moss-covered rocks along our shoreline. Cremation was practiced in Ireland 5,000 years ago and across many ancient civilizations



TORC CELTIC URN-SEASALT BLUE

All are unique as the glaze is hand applied individually and no two Urns are the same. The blue glaze color represents the depths of our seas and lighter blue where the sea washes up on our beaches to meet sea salt covered rocks along our shoreline.



OUR COLLECTIONS

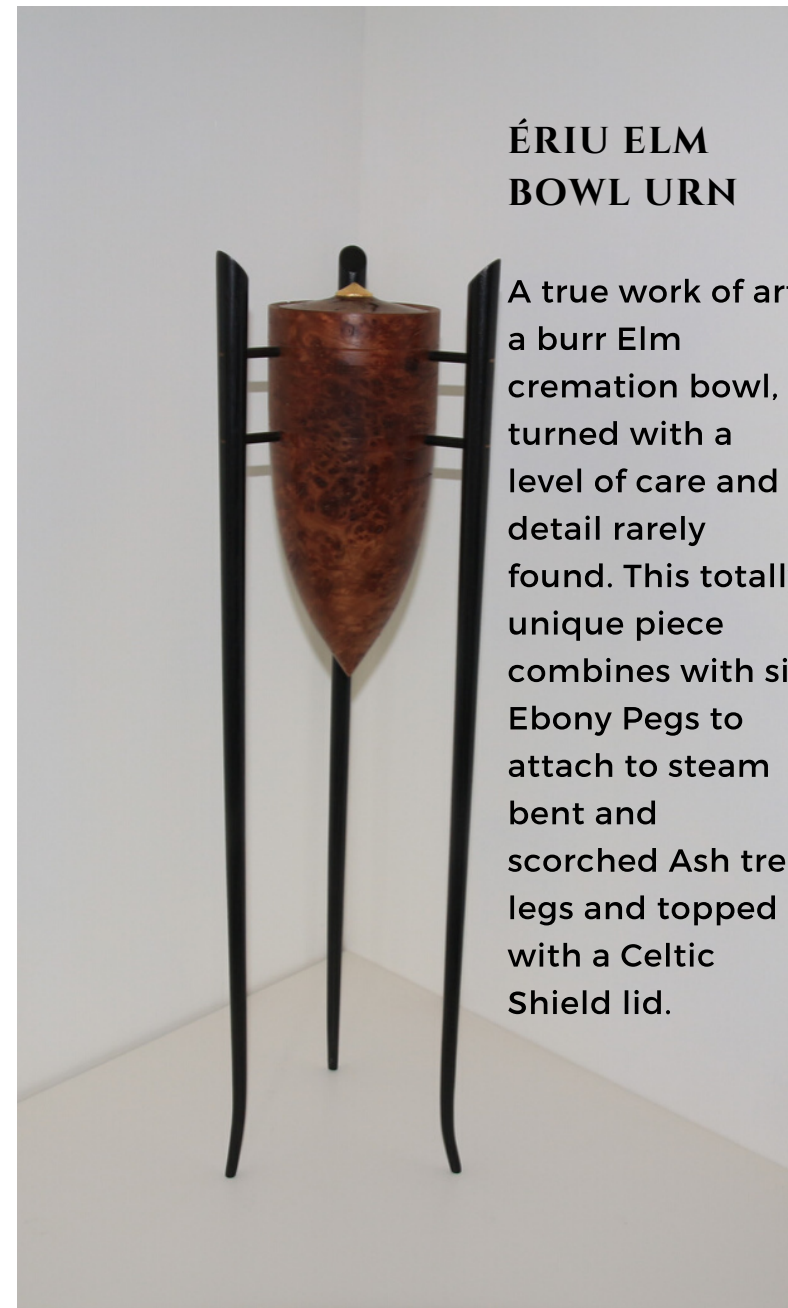
FULL BACKGROUND ON ARTISANS, DESIGN INSPIRATION AND DETAILED DESCRIPTIONS ARE AVAILABLE ON WEBSITE



NECHTAN CELTIC CREMATION URN

A lighter-colored burr Elm cremation Urn. Delicately turned with very fine lining in two sections, connected to long elegant legs of steamed and scorched ash tree legs by 9 ebony pins, representing the nine trees of the legend.

Topped with a Celtic warrior shield complete with golden rivet.



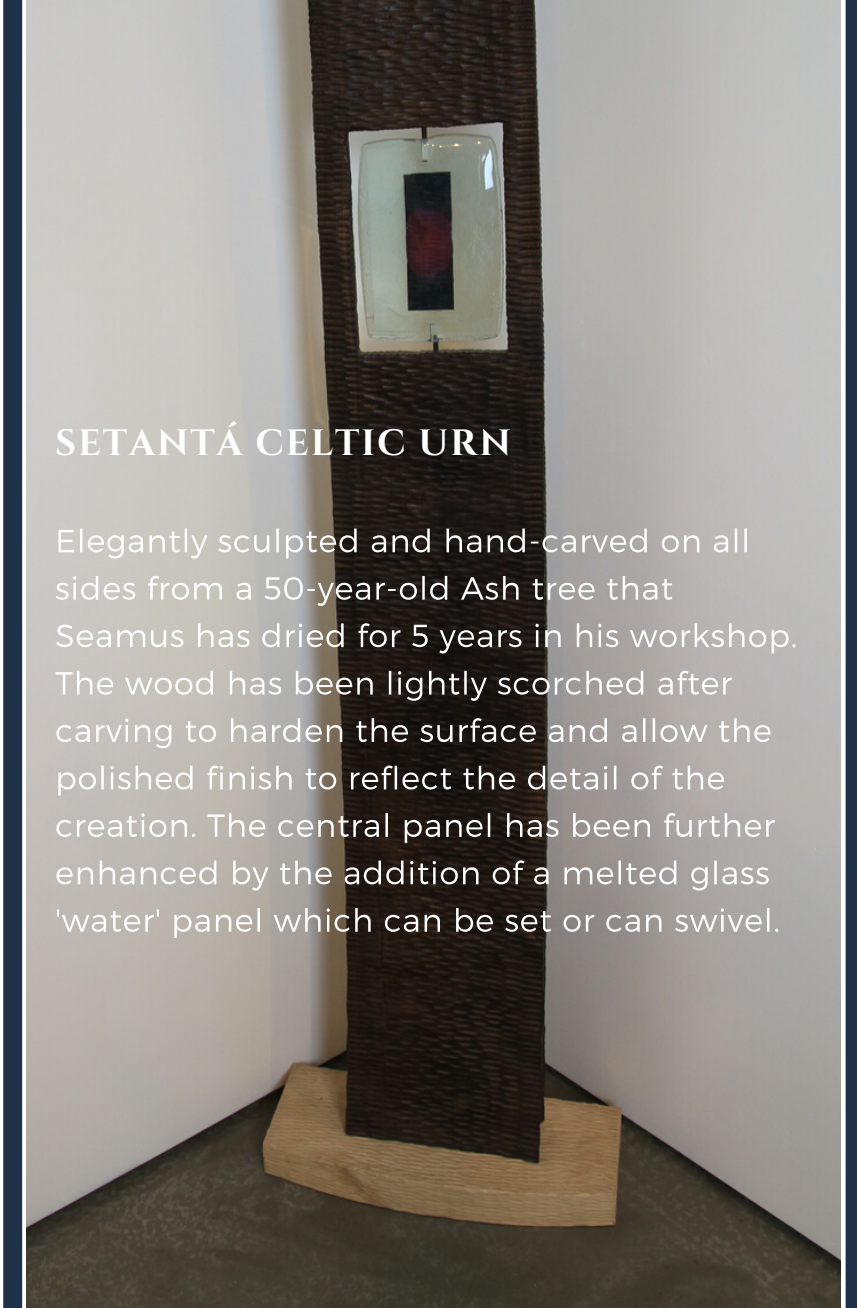
ÉRIU ELM BOWL URN

A true work of art, a burr Elm cremation bowl, turned with a level of care and detail rarely found. This totally unique piece combines with six Ebony Pins to attach to steam bent and scorched Ash tree legs and topped with a Celtic Shield lid.



DAGDA CELTIC URN

The bowl has been carved by wood turning, a delicate technique is required to deliver such fine detail to bring out the natural beauty of the wood. The Urn bowl is held in place by 6 ebony pins and topped with a Celtic warrior shield and further enhanced by a golden rivet.



SETANTÁ CELTIC URN

Elegantly sculpted and hand-carved on all sides from a 50-year-old Ash tree that Seamus has dried for 5 years in his workshop. The wood has been lightly scorched after carving to harden the surface and allow the polished finish to reflect the detail of the creation. The central panel has been further enhanced by the addition of a melted glass 'water' panel which can be set or can swivel.

OUR COLLECTIONS

FULL BACKGROUND ON ARTISANS, DESIGN INSPIRATION AND DETAILED DESCRIPTIONS ARE AVAILABLE ON WEBSITE

IRISH CELT URN -SEAHOLLY

A strong and elegant Urn with a Tri Spiral design on a Celtic medallion representing our culture and heritage. The Irish Celt Cremation Urn with Tri Spiral is one of the most popular Celtic symbols and has been used by the Irish for 5,000 years.



IRISH CELT URN -FERN

It appears in many ancient cultures across Europe and Asia, but is most closely associated with Irish and Celtic art and design. It will always be our symbol for eternity and represented beautifully on this Urn. Irelands legends and mythology tell of a strong and proud people.



IRISH CELT URN -SEASALT

The Irish Celt wore clothes adorned with jewelry and carried decorated shields into battle. Battle shields were often individually decorated with various symbols. They were designed to be both light and strong for defense and attack.



IRISH CELT URN - COBALT

The Irish Celt Cremation Urn is delivered in a beautiful Urn Presentation Box, lined with traditional Irish hessian



OUR COLLECTIONS

FULL BACKGROUND ON ARTISANS, DESIGN INSPIRATION AND DETAILED DESCRIPTIONS ARE AVAILABLE ON WEBSITE

SUN SET OVER TARA

Inspired by the deep Red and orange skies we see as darkness approaches over the Hill of Tara, the day ends but the memories remains. A deep Red with amber tones created as a cast glass sculpture Urn with the base plinth utilized to contain cremated remains.



THE GREEN PATH

The green is to reflect Irish heritage but more subtly than that, in day light it is vivid and solid and as the light fades the true depth of the green appears. 'The green path' was inspired by the different shades of experiences we see as we journey through our lives.



NIGHT SKY OVER IRELAND

Inspired by the deep blue we see as the sun sets and darkness approaches, stars appear and all is still. The changing colors can be appreciated in day light and in artificial light. This Urn has a beautiful feel both polished and natural. Each piece is unique with both perfections and imperfections.



OUR COLLECTIONS

FULL BACKGROUND ON ARTISANS, DESIGN INSPIRATION AND DETAILED DESCRIPTIONS ARE AVAILABLE ON WEBSITE

THE GAEL URN – FERN

This collection represents all that is the heart of the Irish Island nation. The Gael Urn has the powerful Celtic Spiral detailed in the lid and a discrete spiral rivet on the handles, influenced by our Irish heritage and seen in our stone art from Celtic and pre Celtic times.



THE GAEL URN -SEASALT

Each Urn is unique as the glaze is hand applied individually and no two Urns are the same. The glaze color represents the greens of our land, shore. The blues represent the depths of our seas and lighter blue where the sea washes up on our beaches to meet sea moss-covered rocks along our shoreline.



THE GAEL URN -SEAHOLLY

Cremation was practiced in Ireland since c. 3,000 B.C. Many Urns have been found in locations such as Newgrange, Knowth, Dowth. They are thought to have held the remains of the Gaelic Royals, as the time and work to build such tombs would mean years of effort from hundreds of people.



THE GAEL URN -COBALT

Some of the Urns have been found with prized belongings, such as jewelry and weapons. This style of Urn represents the stone carvings found within these famous tombs with detailing on the handles and lid.



PROTOTYPES - 1 ONLY

FULL BACKGROUND ON ARTISANS, DESIGN INSPIRATION AND DETAILED DESCRIPTIONS ARE AVAILABLE ON WEBSITE

THE GLENDALOUGH URN

A totally unique once-off creation with a high level of hand-applied detail around the neck of the Urn with delicate double spiral Celtic pattern -suggesting the 2 lakes of Glendalough and the inter-dependence on each other, the lid is also finished with a Celtic spiral lid.



THE BOANN URN

On the lid of the Boann Celtic Cremation Urn is a single spiral inspired by stone carvings at Newgrange. In Irish mythology, the Spiral represents the sun, with a clockwise spiral indicating the shrinking Winter sun. This Celtic Cremation Urn inspiration is from Irish mythology.



THE BRIAN BORU URN

The Brian Boru Cremation Urn – Standing tall A once off creation both simple and elegant. Created as tall Urn with a Seasalt blue glaze Brian Boru was the last great High King of Ireland and warrior to the end.



THE SHENICK URN

Totally unique and one of a kind Urn with beautiful detailing on the handles. It is discrete, neat and tasteful. This is a slight variation of the Gael Urn - but slightly smaller. A beautiful one-off piece as the glaze was specially commissioned for this Urn only.



COMING SOON

FULL BACKGROUND ON ARTISANS, DESIGN INSPIRATION AND DETAILED DESCRIPTIONS ARE AVAILABLE ON WEBSITE

THE BACKGROUND

Thomas lives with his family in the “Royal County” of Meath. In the heart of Ireland’s Ancient East and not far from the monuments of Brú na Bóinne including Newgrange



THE HISTORICAL MYTHS

Brú na Bóinne is associated with the Tuatha Dé Danaan, the People of the Goddess Danu, a race of super Irish who according to tradition ruled Ireland before the Celtic times.



THE STYLE

Thomas has a very fine contemporary style with clean design and lines, his interpretation utilizes his skills to create a cultured yet contemporary Urn with Irish symbolism represented by the Newgrange Tri Spiral. (or triskele).



THE DESIGN

An urn with both contemporary style and ancient symbolism. It stands about 10 inches tall with the Newgrange Trispiral on the front and a single spiral on the lid and each piece is personally signed by Thomas as a mark of respect to the receiving families.



CONTACT US

IRISH URNS AND KEEPSAKES LIMITED

INISHFREE, MALLAHOW, THE NAUL, COUNTY DUBLIN. IRELAND

PHONE

00353862558531

EMAIL

BOB@IRISHURNS.COM

CRAFTED BY HAND AND
HERITAGE



2020

IRISHURNS.COM